

### **Information**

Social Media refers to any digital platform that allows a user to connect with other users. Common forms of social media platforms can include: Facebook, Instagram, Snapchat, Twitter or YouTube. It is all vital to understand that any opportunity for users to connect with other users is considered social media. This definition extends to online or digital games that connects users together and any websites that allow users to post comments (blog or news and current affairs page). Social media is a common feature in most websites and digital platforms.

While social media allows us to connect with users around the globe, understanding how data is released on social media platforms and adhere to protocols (rules) to apply safety measures is vital. Once information is posted on an online platform, is it extremely difficult to retract that information. A person's online identify can easily comprised when data is released. This can occur by sharing private information (such as passwords) and opening files that contain viruses which may comprise the data stored on a digital system (phone, computer, mobile tablet). Legalities of intellectual property and sharing information without permission are issues which that exist today too.

### **Curriculum Expectation**

It is imperative that students are taught realities of working online and ensure they are respectful and responsible users of digital technology. Students will define and agree on ethical, social and technical protocols. Students will conduct themselves in a respectful manner, use correct procedures when connected with other users and ensure digital systems are safe to ensure data is not compromised.

### **Video Resource**

*Click on the image to open the video*

This video is a collection of research data that looks into the use of social media. It focusses on how children interact with social media. This video was produced in 2017.

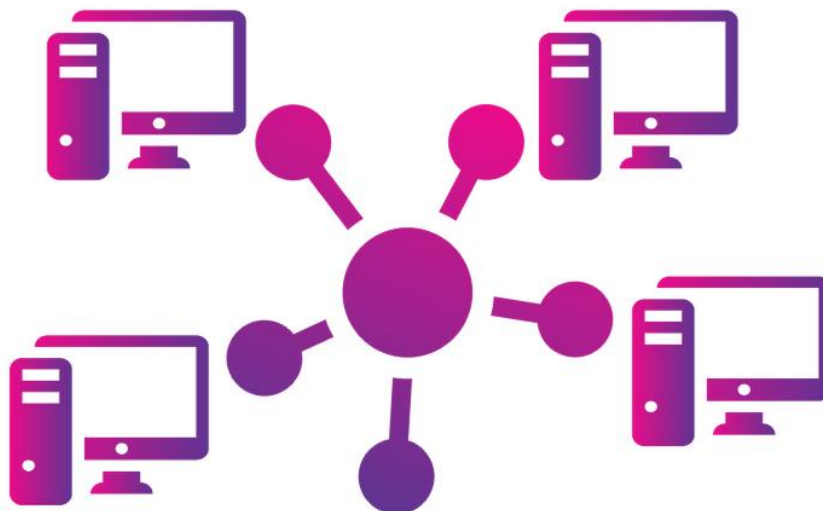


Video Source: Australian Government, Office of the Children's esafety Commissioner

# ONLINE COLLABORATION

---

Rules and regulations when working in an online space



Taking into consideration:



Ethical protocols



Social protocols



Technical protocols

Be clear about the expectations when working online. Take into consideration rules for behaviour and expectations with contributions.

